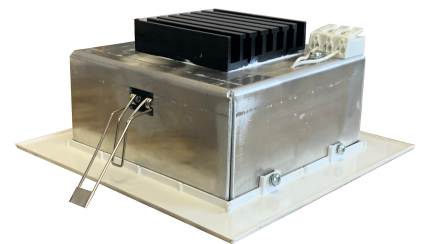
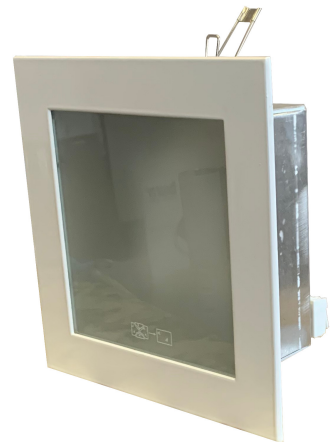
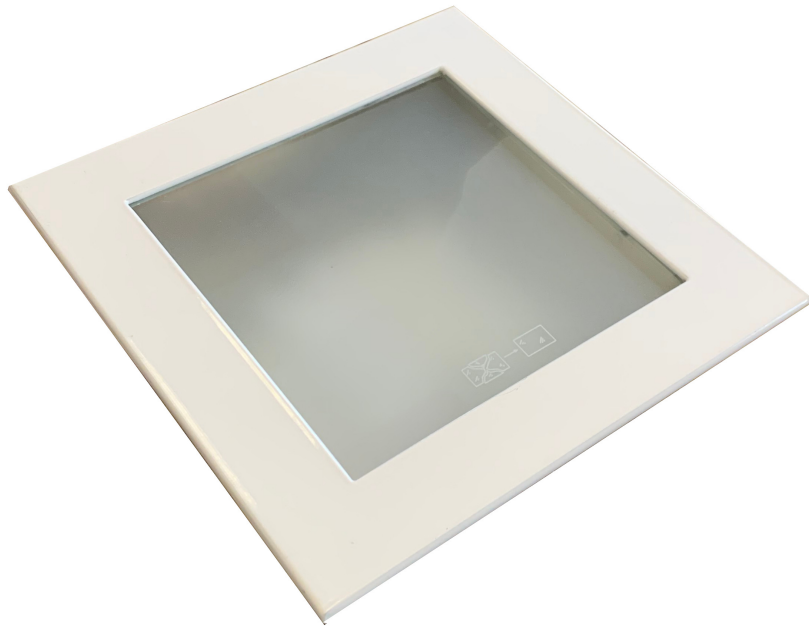


DL 881 OH OPAL LED

LED DOWNLIGHTS 230V

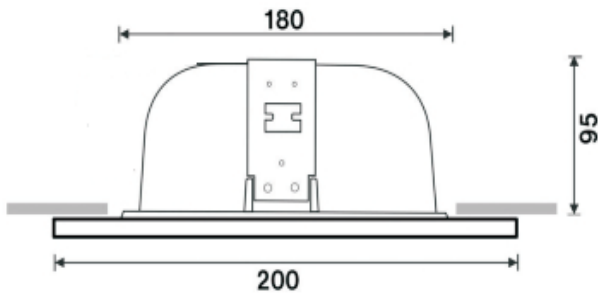


Type / Typ	Power Výkon (W)	Luminous flux Svetelný tok (lm)	Color temperature Farba (K)	Optic Optika	Dimensions Rozmery (AxBxC mm)
DL 881 OH 20W	20W	2000	3000	opal	200x95x180
DL 881 OH 30W	30W	3000	3000	opal	200x95x180



DL 881 OH OPAL LED

Dimensions / Rozmery



Desing / Vyhotovenie

Body of light is made from metal sheet with zinc surfacing treatment.

Ring is made from aluminium diecast with surface RAL9003 komaxit powder colour, heat – tempered.

Standard colours: DL 881 OH – RAL 9003, DL 881 OH/MH – RAL 9003, DL 881 OH/LED – mat chrom.

(Luminaires are available in all RAL versions on request).

Springs are from tempered wire, with zinc surfacing.

Diffuser: OPL opal glass-heat tempered.

Luminaires are constructed for easy adjusting, change, maintainance and cleaning.

Gear box is from metal sheet with surface RAL9003 powder colour, heat-tempered or selfestinguish plast.

Teleso svietidla je vyrobené z pozinkovaného plechu.

Pružiny sú z kaleného pozinkovaného drôtu.

Rám je vyrobený z hliníkovej zliatiny, povrchovo upravený práškovou farbou – komaxit, tepelne vytvrdenou.

Základné farebné prevedenie: DL 881 OH – RAL 9003, DL 881 OH/MH – RAL 9003, DL 881 OH/LED – matný chróm.

(na objednávku akékoľvek farebné prevedenie RAL), Difúzor – OPL (opálové) sklo, tvrdené.

Svietidlá sú konštruované, pre čo najľahšie nastavenie a údržbu a čistenie.