

CL 2008 300 LED IP54

LED INDUSTRIAL FLUORESCENT LIGHT FITTING / LED Priemyselné svietidlá

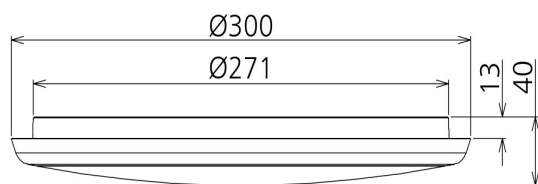


Type / Typ	Power Výkon (W)	Luminous flux Svetelný tok (lm)	Color temperature Farba (K)	Dimensions Rozmery (AxB mm)
CL 2008 300 LED IP54	25W	2180	4000	Ø300x40
Váha 2,18 Kg				

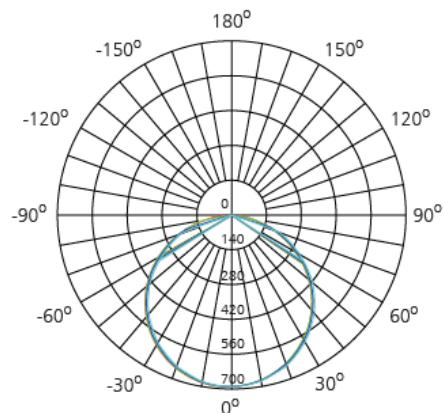
*Teplota okolia : 25°C tolerancia výkonu +/- 5%

** Lumen tolerancia : +/- 7%

Dimensions / Rozmery



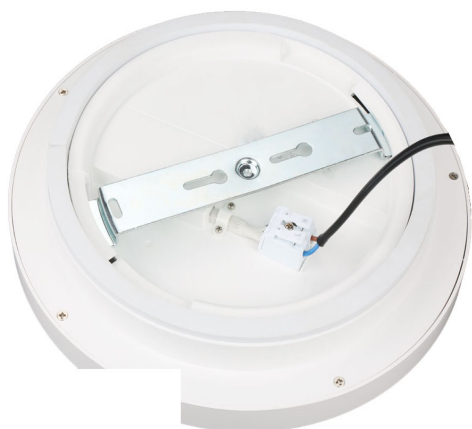
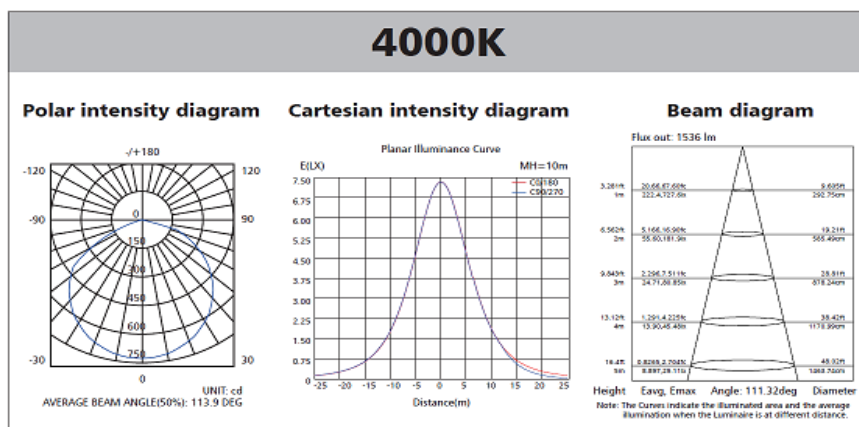
Photometry



UNIT: cd

- C0/180, 115.2 deg
- C30/210, 115.2 de
- C60/240, 115.2 de
- C90/270, 115.1 de

AVERAGE BEAM ANGLE (50%): 115.2 DEG



Aluminum components generate a rust-free product for less maintenance
 Opal Acrylic Diffuser
 Up to 70% energy saving compared to standard CFL
 Environment friendly, without Mercury or any other hazardous substances

Hliníkové komponenty vytvárajú produkt bez hrdze pre menšiu údržbu
 Opálový akrylový difúzer
 Až 70% úspora energie v porovnaní so štandardným CFL
 Priaznivá pre životné prostredie, bez ortuti alebo iných nebezpečných látok